

RECORD OF SURVEY
of the Division of
SECTION 7, TOWNSHIP 10 SOUTH, RANGE 6 EAST, S.B.B. & M.
San Diego County, California.

ANZA-BORREGO DESERT STATE PARK

Public right of way
extends to State Park
boundary

Public right of way
extends to Horse
Camp Road

Public right of
way
along
eastern
edge of
section 7

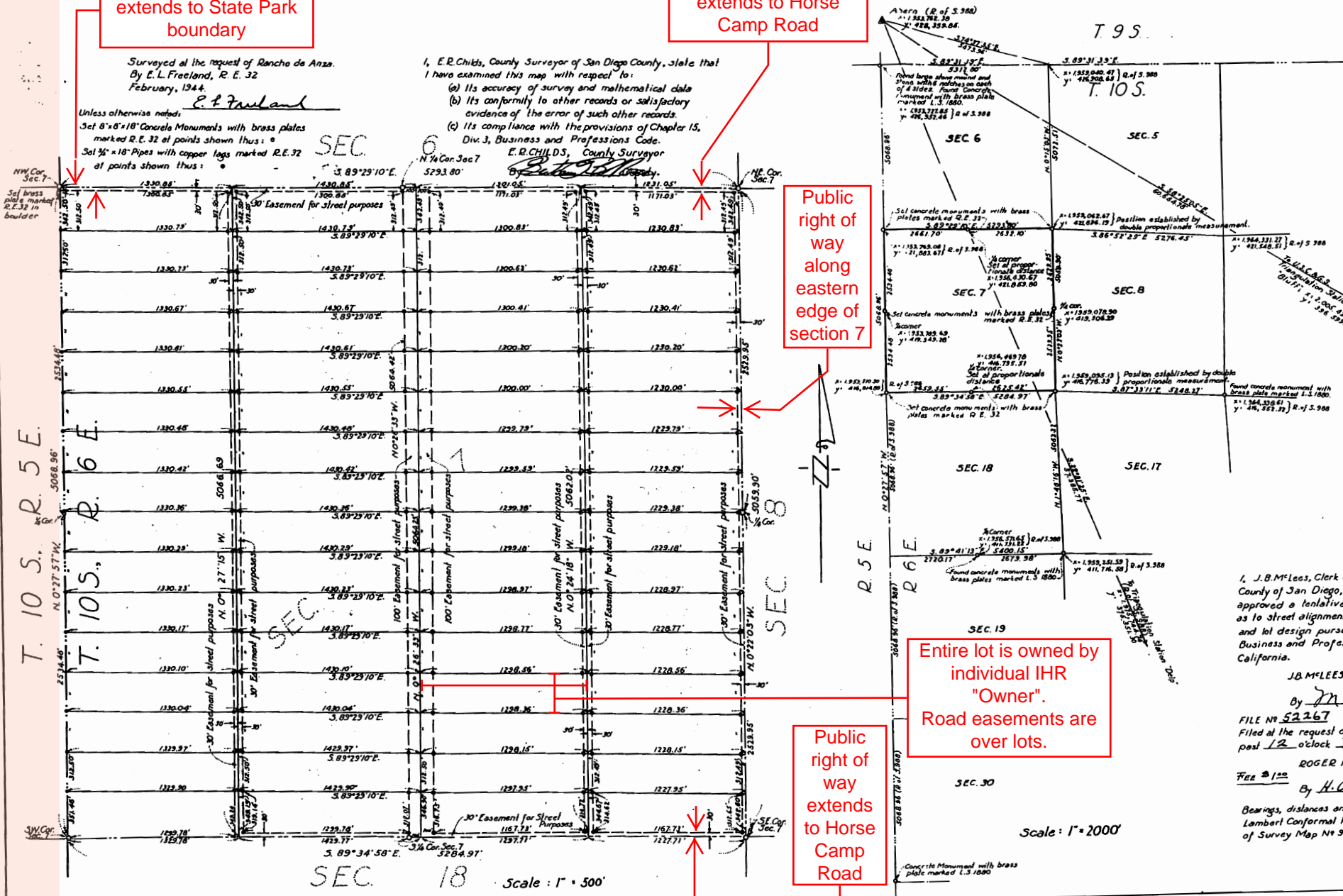
Entire lot is owned by
individual IHR
"Owner".
Road easements are
over lots.

Public right of
way
extends
to Horse
Camp
Road

Surveyed at the request of Rancho de Anza.
By E. L. Freeland, R. E. 32
February, 1944.

I, E. R. Childs, County Surveyor of San Diego County, state that
I have examined this map with respect to:
(a) Its accuracy of survey and mathematical data
(b) Its conformity to other records or satisfactory
evidence of the error of such other records.
(c) Its compliance with the provisions of Chapter 15,
Div. 3, Business and Professions Code.
E. R. CHILD'S, County Surveyor

Unless otherwise noted:
Set 8"x8"x18" Concrete Monuments with brass plates
marked R.E. 32 at points shown thus: *
Set 1/2"x18" Pipes with copper tags marked R.E. 32
at points shown thus: o



I, J. B. McLees, Clerk of the Board of Supervisors of the
County of San Diego, certify that said Board has
approved a tentative map of this division of land
as to street alignment and widths, drainage provisions
and lot design pursuant to Section 11535 of the
Business and Professions Code of the State of
California.

J. B. McLEES, Clerk of the Board of Supervisors.
By J. N. Nasland Deputy
FILE NO. 52267
Filed at the request of E. L. Freeland at 30 minutes
past 12 o'clock P.M., this 18th day of July 1944.
ROGER N. HOWE, County Recorder
Fee \$ 1.00
By H. A. Schneider Deputy

Bearings, distances and coordinates are in terms of the
Lambert Conformal Projection, as shown on Record
of Survey Map No 988.

Scale: 1" = 2000'

SEC. 18 Scale: 1" = 500'